



Cadra 18 Unix Release Notes

SofTech is pleased to provide you with this Cadra Release. This release upgrades the Flexera FlexNet licensing, adds support for the Unicode text and other new AutoCAD entities. This document will briefly review the new features and changes to Cadra. A summary of the installation process is also included toward the end of the document. The enhancements include:

1. Added support for Flexera FlexNet 11.7.
2. Added the ability to license new Add-on features.
3. Added some new entity support to the AutoCAD translator.
4. AutoLoad Text Font dialog changes.
5. Added support for reading AutoCAD 2009 and 2010 file formats.
6. The Text May Scale and May Rotate settings can now be saved.
7. The Info Command now reports entity color.

All users must get a new license to run Cadra 18.

Note that Cadra 18 will be the last Cadra release to support HP-UX 11iv1 (11.11) and Sun Solaris 5.8. Also note that that FlexNet 11.7 (the version Cadra 18 supports) does not support the HP-UX 11iv1 (11.11) and Sun Solaris 5.8 operating systems.

Upgraded Licensing to Flexera FlexNet 11.7

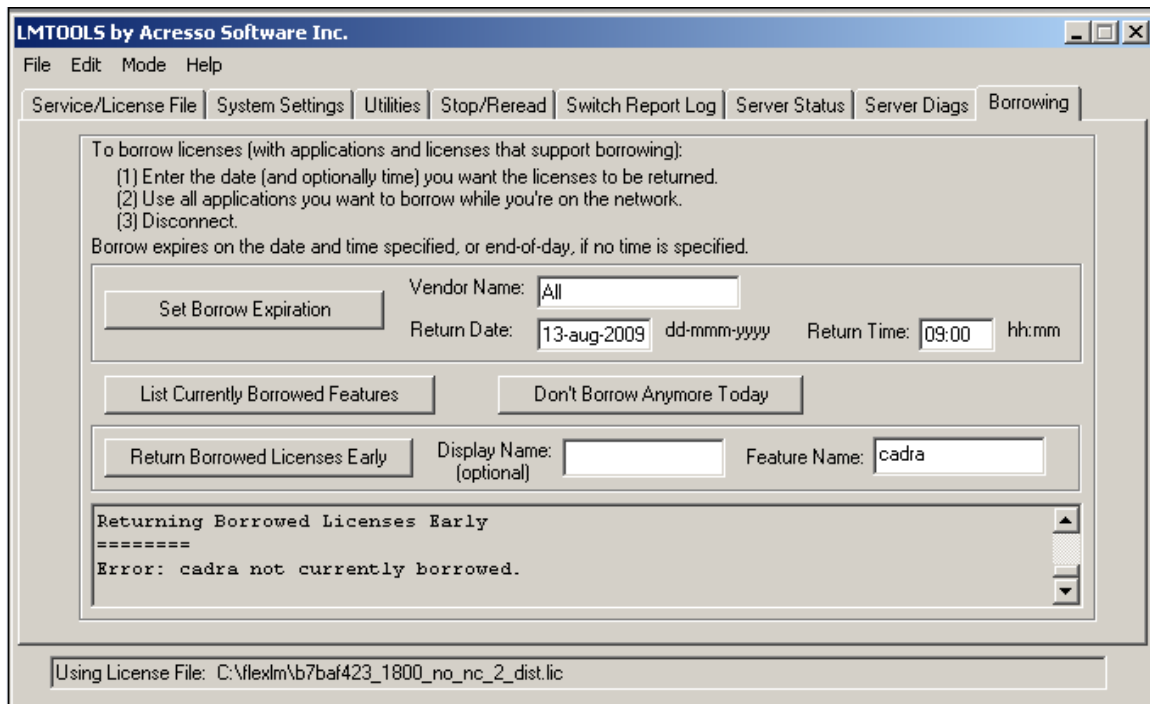
The older FLEXlm 8.1 licensing has been upgraded to the newer FlexNet 11.7. This upgrade adds much stronger encryption of the licenses. We also added the ability to borrow licenses to this release. This means that all current FLEXlm users will need to get new licenses upgraded to support FlexNet.

Borrowing a license is the process of a license server loaning a floating license out to a client for a specified period of time. This allows the client machine to run a specified set of Cadra features while the client machine is not connected to the server. The license server treats the borrowed license as unavailable for other floating users until the borrow expiration time occurs.

Borrowing requires these steps:

1. Ensure that the borrowing client system is connected to the license server system.
2. On the server system initiate borrowing using the **lmtools** utility. In the borrow tab enter the license expiration date and time and select the Set Borrow Expiration button.
3. On the client machine use the **lmborrow** utility to specify the vendor daemon (SOFTECH) whose features are being borrowed and the borrow expiration date and time.
4. On the client machine run Cadra and use all of the Cadra features you want to borrow. Only the features used will be borrowed.
5. Once you have borrowed all of the features you need for the borrow period you can prevent additional features from being borrowed by running **lmborrow -clear**. This does not clear the local information about the features you have already borrowed.
6. Shutdown Cadra and disconnect the client machine from the server machine.
7. The client machine is now able to run Cadra and use all of the borrowed features up until the expiration date and time.

This is the **lmtools** utility setting the expiration date and time on the server system:



This shows the **lmborrow** utility initiating borrowing on the client machine:

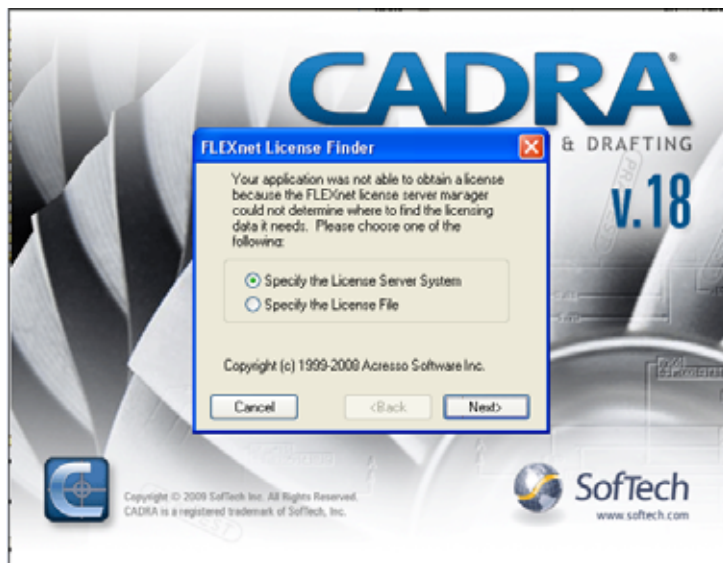
```
Command Prompt
C:\>cd cadra
C:\CADRA>cd cadrav18009
C:\CADRA\cadrav18009>cd flexlm
C:\CADRA\cadrav18009\flexlm>lmborrow qaenglish
lmborrow - Copyright (c) 1989-2008 Aresso Software Inc. All Rights Reserved.

Usage: lmborrow <all:vendorname> dd-mm-yyyy [hh:mm]    <To borrow>
lmborrow -status    <Report features borrowed to this node>
lmborrow -clear     <Changed your mind -- do not borrow>
lmborrow -return [-c licfile] [-d display_name] [-fqdn] feature
                    <Return feature early>
lmborrow -help      <Display usage information>

C:\CADRA\cadrav18009\flexlm>lmborrow -status
lmborrow - Copyright (c) 1989-2008 Aresso Software Inc. All Rights Reserved.

C:\CADRA\cadrav18009\flexlm>lmborrow softech 12-aug-2009
lmborrow - Copyright (c) 1989-2008 Aresso Software Inc. All Rights Reserved.
Setting LM_BORROW=12-aug-2009:softech:12-aug-2009
```

When Cadra is started on the client machine disconnected from the server machine this prompt will be displayed:



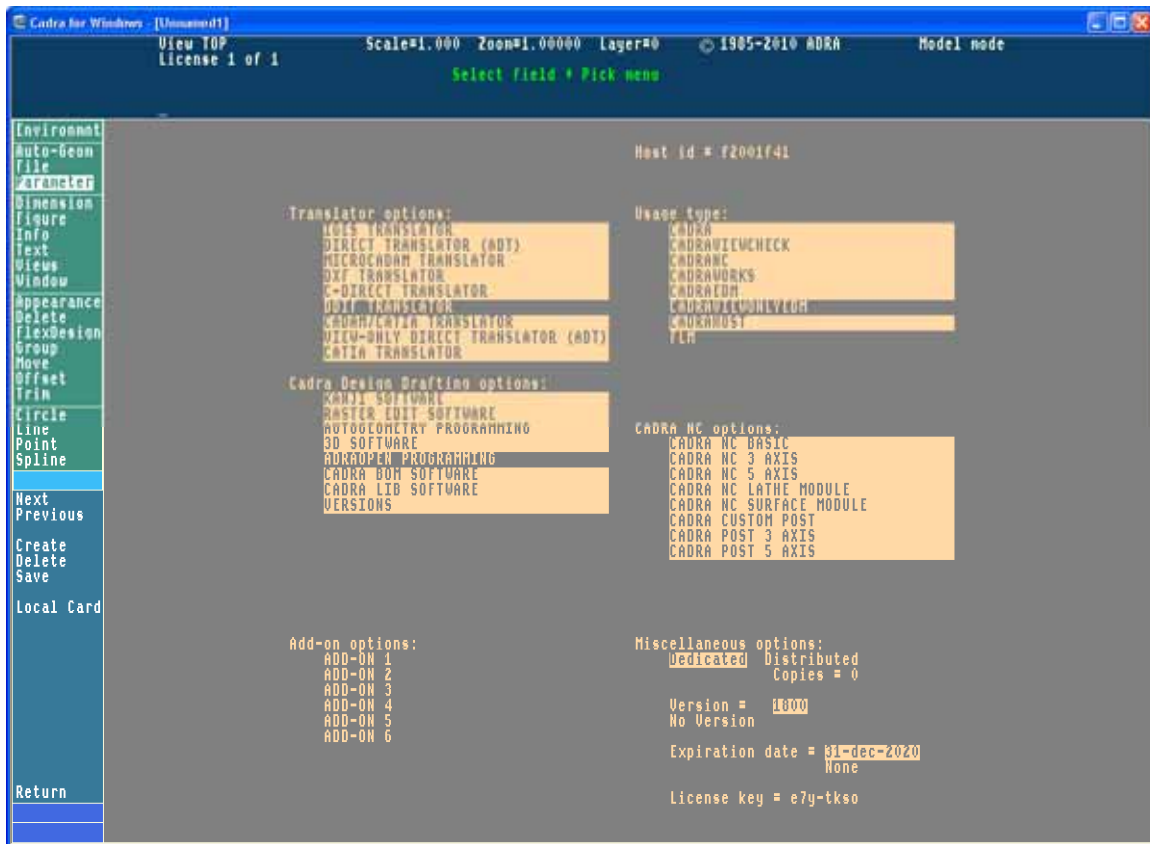
Cancel out of this window. Cadra will find the borrowed license once it determines the machine is not on the network. (this may take a few minutes).

Use Cadra at will, disconnected from the network until the borrow expiration.

Note that if the FlexNet License Finder cannot connect to the server because of a blocking firewall you may see an internal software failure error in Cadra.

Added Ability to License new Add-on Features

It is now possible to license arbitrary add-on features using Cadra licensing. If an add-on feature has been licensed and paid for then it will be an item on the license and will display on the license screen:



Support for New Entities in the AutoCAD Translator

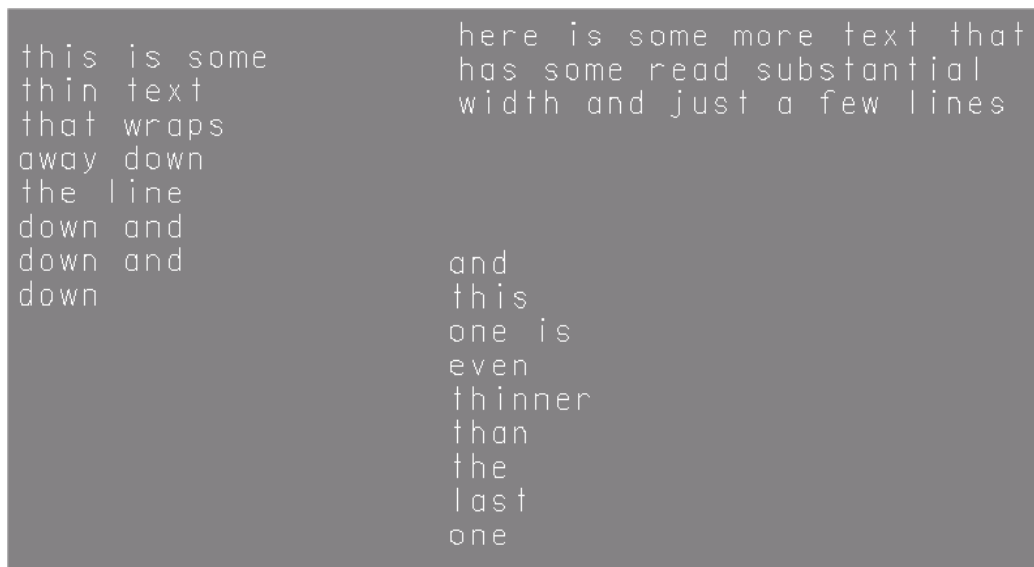
This release has added support for:

1. the Multi-Leader (MLEADER) entity.
2. Multi-Line Text (MTEXT) word wrap.
3. the reading of UNICODE text.
4. the reading of text using a TrueType font.

Examples of the Multi-Leader entity:



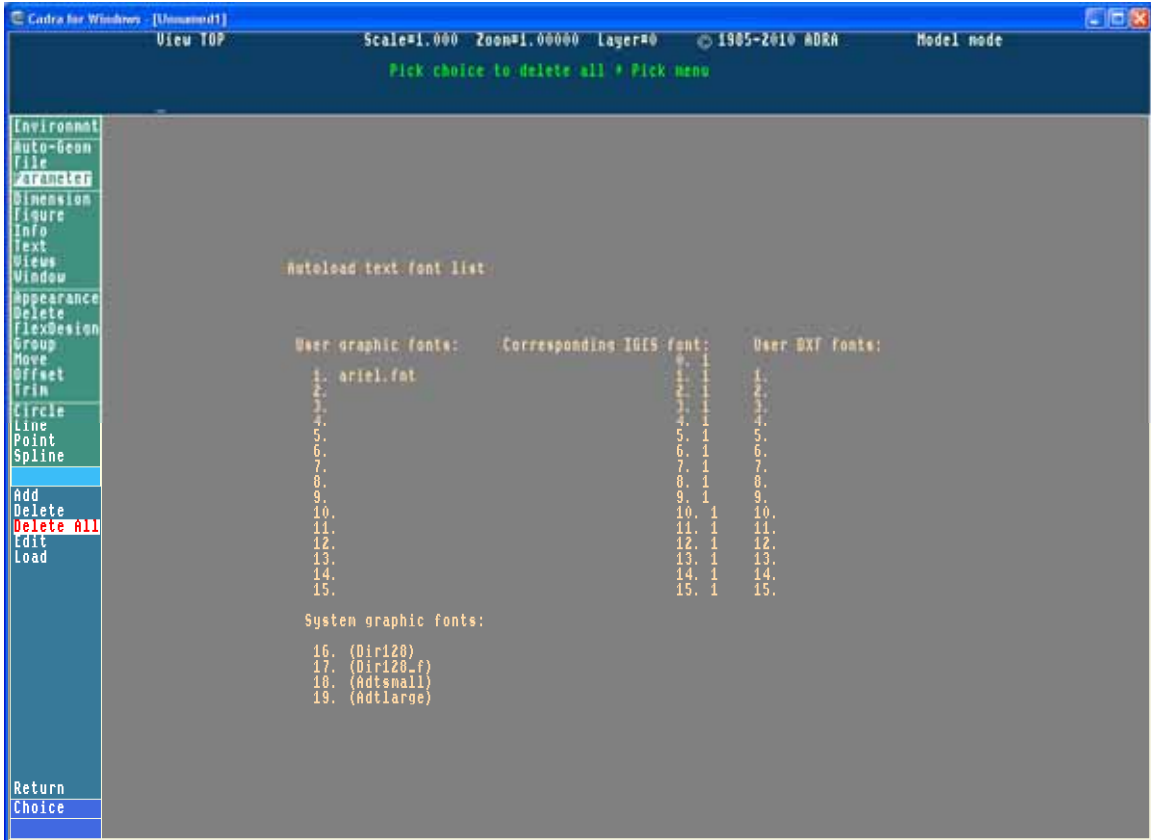
Examples of MTEXT Word Wrap:



AutoCAD files containing TrueType fonts and UNICODE text using TrueType fonts can now read into Cadra. Note that Cadra does not support AutoCAD .shx fonts.

AutoLoad Text Font dialog changes

There is a limit of fifteen fonts that can be loaded in a Cadra session. When reading in AutoCAD files which use TrueType fonts it is possible that more than fifteen TrueType fonts might be called for. In this case only the first fifteen fonts will be loaded. To allow the user to clear the loaded fonts in preparation for reading in a file known to contain TrueType fonts a **Delete All** button has been added to the **Autoload Text Font** dialog.



Support for AutoCAD 2009 and 2010 file formats

Cadra now reads and writes AutoCAD 2009 DWG and DXF file formats and reads AutoCAD 2010 DWG and DXF file formats..

Saving Text May Scale and May rotate Settings

The Text/Parameters **May Scale** and **May Rotate** settings are preserved to the profile (prf.sys) so they are maintained for future Cadra sessions.

Info Command Now Reports Entity Color

The Entity option in the Info command now reports the entity color number as well as all of the other information it has always reported.

Virtual Machine Licenses

Both Cadra FLM and FlexNet check for virtual machine addresses and do not allow Cadra sessions to run using a dedicated virtual machine license or using a floating license which was created for a virtual machine. Cadra sessions can be run on virtual machines using a seat from a floating license which is created for a hardware machine only. To help you determine if the machine you are using is a virtual machine, the License screen (Parameter/License) in Cadra will display the word "virtual" in the hostid slot if you are running on a virtual machine.

Installing the Cadra 18 Release

Recommended Minimum System Configuration

HP/900 Series Systems:

- HP-UX 11i v1 (11.11), 11i v2 (11.23) or 11i v3 (11.31)
- 32 MB RAM
- 70 MB free disk space (28 MB is for Cadra documentation)

Sun Systems:

- Solaris 5.8, 5.9 or 5.10
- 32 MB RAM
- 80 MB free disk space (28 MB is for Cadra documentation)

Linux Systems:

- Linux 4 (Kernel 2.6.9-67.ELsmp)
- 32 MB RAM
- 80 MB free disk space (28 MB is for Cadra documentation)

Before You Begin Installation

- Have your Product Authorization License (PAL) available during the installation procedure.
- For detailed information on installation options including license installation, print a copy of the **Installation Guide** in HTML format on the top level of the CD.

Installation Media

Multiple platform and languages versions of Cadra are available on the CD-ROM.

Cadra Installation

1. Log on as root. Do not change user to superuser. You must be logged on as root!
2. Create a hard disk directory to hold the Cadra files. For example:

```
% mkdir /usr/cadra
```

3. Insert the CD into the CD-ROM drive and create the "mount point" (as described in *Mounting the CD-ROM* in the **Installation Guide**).

4. Go to the directory where the Cadra installation will go (created above):

```
% cd /usr/cadra
```

5. Copy the kit files off the CDROM into the installation directory:

```
% tar -xvf /cdrom/unix/<tarfile>
```

where /cdrom/unix is the CDROM directory and <tarfile> is either solaris18.tar, hpux18.tar or linux18.tar.

Note: Some machines may have a /CDROM directory. Check with your System Administrator to determine the name of your CD-ROM directory.

6. Run the installation script by typing `./install` followed by the name of the directory you created in Step 2. For example:

```
./install /usr/cadra
```

7. Once you complete the full installation, activate the software by executing the following commands:

```
%rehash
```

```
%cadra
```

Flexera FlexNet License Installation (HP-UX and Solaris only)

If you choose Flexera FlexNet licensing then you need to do the following:

- For dedicated licenses perform steps 3-7.
 - For clients of floating licenses just do step 8.
 - For floating license servers perform all steps except 8.
1. Determine if you will be using dedicated licenses or floating licenses. If you will use floating licenses you will additionally need to decide if you will be using a single license server or three redundant license servers.
 2. If you are using floating licenses install the Softech FlexNet License Server on the selected server system(s). The Softech FlexNet License Server is provided in a separate tar file (`hpflexnet.tar` for HP-UX and `sunflexnet.tar` for Sun Solaris). Untar this file into a directory (i.e. `flexnet`) beneath the Cadra install directory. This package includes the FlexNet User Guide that documents all the utilities included in the package.
 3. Send the name and hostid (output from **lmhostid**) of each system requiring a license to Softech. These are the systems where the dedicated licenses are to be used or the systems to be used to serve floating licenses.
 4. Softech will issue license files (*.lic) to you via E-Mail.
 5. Save the .lic file(s) you receive to a directory on the licensed systems. If you are using floating licenses this should be the directory that was specified when the license server software was installed as a service.
 6. Set the `ADRA_NLS` symbol to point to the full file specification of your `nls.txt` file. Set the `LM_LICENSE_FILE` symbol to point to the full file specification of the .lic file or a colon-separated list of directory paths.
 7. Create the `nls.txt` file. If you are using dedicated licenses this is the last step. Place the following line in the `nls.txt` file:

```
.globetrotter <path>
```

where `<path>` is the absolute path to the directory where the *.lic file(s) are. Do not include a file name in this path.
 8. If you are using floating licenses you need to create a *.lic file on each client system that points to the server system(s) for a license. This file should contain the following two lines:

```
SERVER <server-name> <server-hostid>  
USE_SERVER
```

Where `<server-name>` is the network name of the license server and `<server-hostid>` is the server hostid. If using three redundant license servers this file should contain three `SERVER` lines specifying the three license servers. Set the `LM_LICENSE_FILE` symbol to point to the full file specification of the .lic file or a colon-separated list of directory paths.
 9. If you are using floating licenses, start the FlexNet License Manager service on the server systems. To start the FlexNet server issue the following command

```
% lmgrd -c <path>
```

where <path> points to the directory where you put the .lic license file(s).

10. A shell script is provided to help setup your system to automatically start the **lmgrd** daemon upon a system reboot. It is called **cadralmgrd**. It assumes you have installed **lmgrd** in /usr/cadra/bin/flexnet and that you will also place the .lic files there. If this is not true you will need to edit this file. The file should be placed in the init.d directory and a link should be set from the rc2.d directory. In the following <root-dir> is /sbin on HP-UX and /etc on Sun Solaris and <number> is 900 on HP-UX and 99 on Sun Solaris. After cd'ing to the directory where you have initially placed (and possibly edited) the cadralmgrd file issue the following commands:

```
% cp cadralmgrd <root-dir>/init.d/cadralmgrd
% cd <root-dir>/rc2.d
% ln -s <root-dir>/init.d/cadralmgrd S<number>cadralmgrd
```

11. If you are using floating licenses, you can read the FlexNet End User's Guide for more information on FlexNet Utilities and options. If you are interested in additional FlexNet monitoring utilities you will need to contact Flexera directly (www.flexera.com).

Note that FlexNet 11.7 (the version Cadra supports) does not support the HP-UX 11.11 and Sun Solaris 5.8 operating systems.

If you have any questions or concerns regarding updates to Cadra licensing please contact your local SofTech representative or Cadra/SofTech Customer Service at 1-800-321-2372.

Corrective Maintenance

Every release of Cadra addresses corrective maintenance issues our customers and partners report as problems or issues throughout the world. The table below lists the most significant problems and issues addressed for this release:

| SOFTECH SPR NUMBER | DESCRIPTION |
|--------------------|---|
| 55763 | Plot driver list in Documentation window has spelling error and two omissions. |
| 57197 | DXF: Arrows not maintaining position |
| SPR1060 | AdraOpen, AoACheckAbort, AoAClearAbort not working |
| SPR1208 | Save Text May Scale and May Rotate settings to prf.sys file |
| SPR1257 | A generic Cadra plugin option for any VB Cadra plugin that is programmed. |
| SPR1272 | Info command should give color or color number |
| SPR1282 | FCS- alt symbols in pre or post text of a dimension, disappear on write dxf, dwg , in acad, |
| SPR1319 | MFC*.tmp files are left behind after file, save in Cadra |
| SPR1324 | Cadra GUI-views, create, return is missing |
| SPR1345 | Fractions are not maintained if pre and post text are used |
| SPR1348 | inter character spacing and inter line spacing do not maintain on text edit |
| SPR1351 | Cadra Crashes when loading external figures |
| SPR1354 | Cadra crashes reading dxf file written with paperspace viewport enabled |
| SPR1401 | Cadra Crashes reading in external figures |

Platform Support

This release has been qualified for the platforms listed in the table below. The CD distributed with this update release contains software for all the supported platforms.

| Workstation | Operating System | Revision Level |
|---|----------------------------|---|
| Sun Sparcstation | Sun Solaris | 5.8, 5.9, 5.10 |
| Hewlett Packard HP 11.23 PA-RISC only HP 11.31 ITANIUM only | HP-UX | 11i v1 (11.11), 11i v2 (11.23), 11i v3 (11.31) |
| 32-bit x86 (Intel/AMD) systems – see https://hardware.redhat.com/ | Redhat Enterprise Linux WS | 4 (Kernel 2.6.9-67.ELsmp) |

Copyright (c) 1984 - 2010 SofTech, Inc.

All rights reserved.

PROPRIETARY RIGHTS NOTICE: No part of this material may be reproduced or transmitted in any form or by any means, electronic, mechanical, or otherwise, including photocopying and recording or in connection with any information storage or retrieval system, without the permission in writing from SofTech, Inc.

Cadra-III is a registered trademark of SofTech, Inc. Cadra, Cadra-II, Cadra 3D, Cadra PC, CadraViewCheck, CadraWire, CadraWorks, CadraMCD, Cadra PDM, DesignGateway, ADRA/Open, ADT, Autogeometry, FlexDesign, and The Vault are trademarks of SofTech, Inc. All other product names and services identified throughout this documentation are trademarks or registered trademarks of their respective companies.

SofTech, Inc.
59 Composite Way, Suite 401
Lowell, MA 01851, USA
Telephone: 978.513.2700
Fax: 978.458.4096
Cadra Support: 800.800.3702
Web Address: www.SofTech.com

